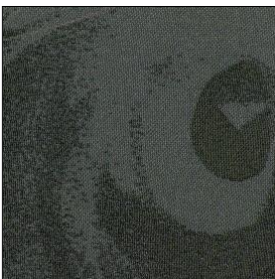


# Stretch-Fabrics

- **incontinence coated**
- **impregnated**
- **machine washable at 30° C**
- **several designs available**

- **stretchable**
- **easy to clean**
- **hard - wearing**
- **can also be supplied in small quantities (from 1 meter)**

<i>Art.-no.</i>	<i>Description</i>	<i>Base Colour</i>	<i>Roll width approx.</i>
<b>E 8 1 100-606*</b>	<b>Fabric „Red Ellipse“</b>	<b>red</b>	<b>1550 mm</b>
<b>E 8 1 100-677*</b>	<b>Fabric „Slate Grey“</b>	<b>dark grey</b>	<b>1550 mm</b>
<b>E 8 1 100-678*</b>	<b>Fabric „Night Blue“</b>	<b>dark blue</b>	<b>1550 mm</b>
<b>E 8 1 100-993*</b>	<b>Fabric „Night Shadow“</b>	<b>anthracite</b>	<b>1550 mm</b>
<b>E 8 1 100-995*</b>	<b>Fabric „Sunset“</b>	<b>orange</b>	<b>1550 mm</b>



Night Shadow (E 8 1 100-993)



Night Blue (E 8 1 100-678)



Red Ellipse (E 8 1 100-606)

\* Manufactured using Trevira CS.

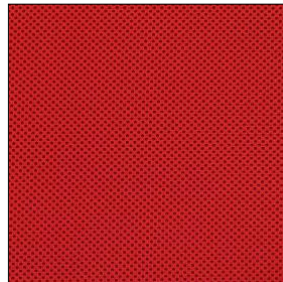
These Fabrics are fire retardant to BS 5852: 2006 Clause 11 Crib 5

## ***Further Fabrics in our Product Range***

<i>Art.-no.</i>	<i>Description</i>	<i>Roll width approx.</i>
<b>E 8 1 204</b>	<b>Uni-coloured, foam backed fabric „black“ (without Incontinence Coating)</b>	<b>1500 mm</b>
<b>E 8 1 500</b>	<b>Stretch-Skai, „blue“</b>	<b>1400 mm</b>
<b>E 8 1 501</b>	<b>Stretch-Skai, „black“</b>	<b>1400 mm</b>
<b>E 8 1 510</b>	<b>Stretch-Skai, padded, „blue“</b>	<b>1500 mm</b>
<b>E 8 1 511</b>	<b>Stretch-Skai, padded, „black“</b>	<b>1500 mm</b>
<b>E 8 1 512</b>	<b>Stretch-Skai, padded, „red“</b>	<b>1500 mm</b>
<b>E 8 1 513</b>	<b>Stretch-Skai, padded, „dark blue“</b>	<b>1500 mm</b>
<b>E 8 1 600</b>	<b>Skai-Imitation Leather, colours on request</b>	
<b>E 8 1 800</b>	<b>Interlace Spacer, colour „black“, 4mm</b>	<b>1600 mm</b>
<b>E 8 1 802</b>	<b>Interlace Spacer, colour „red“, 3mm</b>	<b>1400 mm</b>
<b>E 8 1 803</b>	<b>Interlace Spacer, colour „royal blue“, 3mm</b>	<b>1400 mm</b>



Stretch-Skai blue (E 8 1 500)



Interlace Spacer red (E 8 1 802)



Interlace Spacer black (E 8 1 800)