

Headrests

Our high-quality range provides a variety of headrests and hardware solutions to meet a variety of requirements. All our headrests are standard polyurethane foam parts with pliable metal inserts. The headrests are made of soft polyurethane which is leather structured and easy to clean. All headrests and headrest hardware are fitted with ball and socket joints. This provides a full range of adjustment.

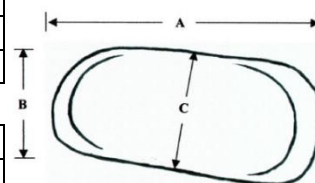
Standard Headrest



A simple solution in a compact, shaped headrest, ideal for transportation or for occasional use.

E 1 3 600=1 (small)	
A=	22,0 cm
B=	10,0 cm
C=	10,0 cm

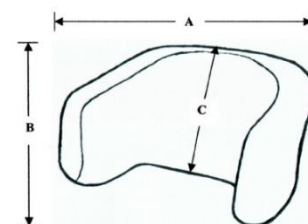
E 1 3 600=2 (large)	
A=	30,0 cm
B=	15,0 cm
C=	14,0 cm



Lateral Headrest (narrow)

The long, lateral shape can be adjusted on both sides to form a wider, more open headrest.

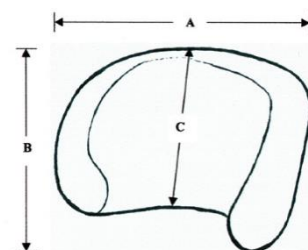
E 1 3 300 (narrow)	
A=	22,0 cm
B=	14,0 cm
C=	14,0 cm



Combi Headrest

This shell-shaped headrest is anatomically formed with support for the occiput in mind.

E 1 3 100=1 (small)	
A=	21,5 cm
B=	15,0 cm
C=	13,0 cm



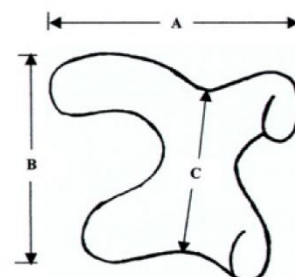
Vario Headrest



Where there is little head control the Vario provides optimum support as well as ample support for the occiput shelf. The wings can be adjusted to form a standard headrest, whilst leaving the ears clear, i.e. for spectacles or hearing aids.

E 1 3 500=1 (small)	
A=	18,0 cm
B=	15,0 cm
C=	11,5 cm

E 1 3 500=2 (large)	
A=	21,0 cm
B=	19,0 cm
C=	15,0 cm



Headrest Core Plate



Headrest Core Plate with ball-joint mounting (25.4 mm / 1") for producing individual headrests.

E 1 3 610 Headrest Core Plate with ball-joint mounting

Custom Headrest



We also manufacture headrests individually to your specifications.

E 1 3 900 Custom Headrest (simple form)

E 1 3 900=1 Custom Headrest (complex form)

Headrest Cover



We offer covers for all our headrests. We also sew covers for custom made headrests.

E 1 3 015 Headrest Cover

Headrest Hardware



Two versions of the headrest hardware are available. Both use the tried and tested ball and socket system. The offset hardware is used particularly with very deep (kyphotic) seating systems.

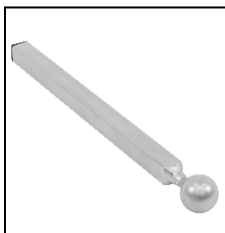
E 1 3 011 Headrest Hardware, offset



The straight version of the headrest hardware is the most commonly used version. For use with standard seating systems it also features the ball and socket joint.

E 1 3 010 Headrest Hardware, straight

Ball and Rod



Ball-Rod (15 mm square bar stainless steel, diameter of ball 25.4 mm/1"). The fixing ring (Art.-No. E 1 3 001) is included in the delivery.

E 1 3 012 Ball-Rod, short (200 mm)

E 1 3 012=L Ball-Rod, long (350 mm)

Headrests

Headrest Mounting Kit, coned joint



- stainless steel, mini (E 1 3 013=1)
- 10 mm square, incl. E 1 3 003 and E 1 4 032
- stainless steel (E 1 3 013=2)
- 15 mm square, incl. E 1 3 003 and E 1 4 032
- 2-hole mounting plate

Headrest Bracket Stainless Steel, straight



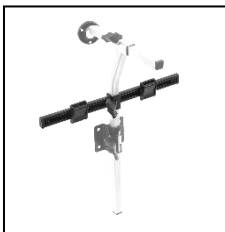
- cross adjustment (E 1 3 016)
- complete with accessories

Headrest Bracket Stainless Steel, offset



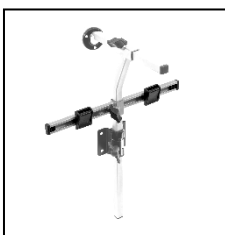
- cross adjustment (E 1 3 017)
- complete with accessories

Crossbar Belt Guide



- attachment to headrest hardware (15 mm)
- U profile with two cam locks (25 mm)
- for fitting chest harnesses etc.
- offers height and width adjustment for optimal belt positioning

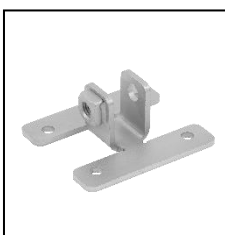
E 1 3 002 Crossbar Belt Guide for headrest hardware



E 1 3 002=1 Crossbar Belt Guide for headrest hardware, stainless steel, 300 mm

E 1 3 002=2 Crossbar Belt Guide for headrest hardware, stainless steel, 380 mm

Screw Plate for Headrest



- pressed stainless steel plate for mounting headrest to the hardware
- to fit 15 mm square tube
- hole spacing: horizontal 50 mm, vertical 40 mm

E 1 3 003 Stainless Steel Headrest Mounting Plate

Headrest Shell



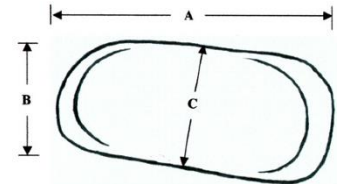
- vacuum formed PE shell with four mounting holes for screw plate E 1 3 003

E 1 3 006 Headrest Shell, size 1

E 1 3 007 Headrest Shell, size 2

E 1 3 006 (size 1)	
A=	27,0 cm
B=	13,0 cm
C=	11,5 cm

E 1 3 007 (size 2)	
A=	28,0 cm
B=	16,0 cm
C=	14,0 cm



Headrest Shell, padded



- vacuum formed PE shell with four mounting holes for screw plate E 1 3 003
- padded to your specifications

E 1 3 008 Headrest Shell, padded, size 1

E 1 3 009 Headrest Shell, padded, size 2